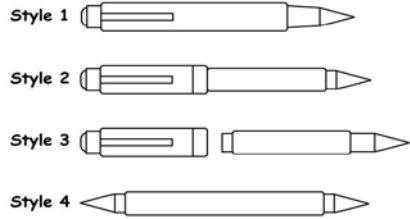


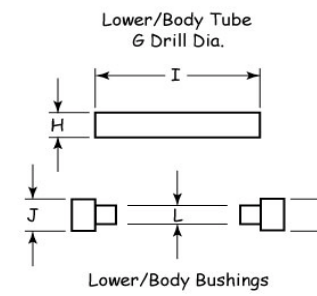
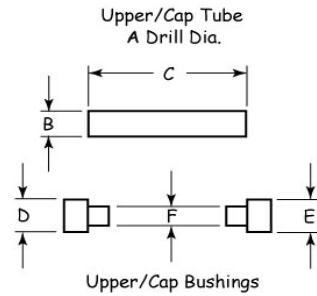
Pen Kit References for Bushings and Tubes

W Racinowski WRACINOWSKI at WI dot RR dot COM Revised 12-14-09



Cells that are blank require dimensions.

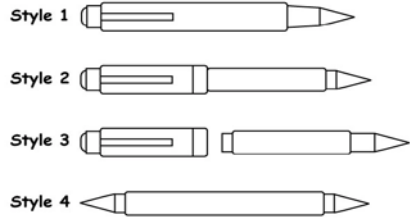
Tolerances for:
2 place Dims is +/- .01
3 Place Dims is +/- .003



Pen Kit Supplier	Pen Kit Description Grouped by Styling	Suppliers Bushing Set	Pen Style	Upper / Cap Tube			Upper / Cap Bushings			Lower / Body Tube			Lower / Body Bushing		
				A Drill Dia.	B Dia.	C Length	D Dia.	E Dia.	F Dia.	G Drill Dia.	H Dia.	I Length	J Dia.	K Dia.	L Dia.
Arizona Silhouette	Sierra Twist BP	20A	1	27/64"	0.410	2.21	0.474	0.474	0.381	x	x	x	x	x	x
Berea	Sierra Twist BP	20A	1	27/64"	0.410	2.21	0.474	0.474	0.381	x	x	x	x	x	x
Craft Supply USA	Apprentice Classica Twist BP	486-2021	1	27/64"	0.410	2.21	0.474	0.474	0.381	x	x	x	x	x	x
Craft Supply USA	Sienna Twist BP	050-4660	1	27/64"	0.410	2.21	0.474	0.474	0.381	x	x	x	x	x	x
Penn State	Gatsby Twist BP	PKGABU	1	27/64"	0.410	2.21	0.474	0.474	0.381	x	x	x	x	x	x
Rockler	Sierra Twist BP	30467 or 20A	1	27/64"	0.410	2.21	0.474	0.474	0.381	x	x	x	x	x	x
Woodcraft	Wall Street II Twist BP	146597	1	27/64"	0.410	2.21	0.474	0.474	0.381	x	x	x	x	x	x
Arizona Silhouette	Sierra Button Click BP	20A	1	27/64"	0.410	2.42	0.474	0.474	0.381	x	x	x	x	x	x
Berea	Sierra Button Click BP	20A	1	27/64"	0.410	2.42	0.474	0.474	0.381	x	x	x	x	x	x
Penn State	Gatsby Button Click BP	PKGABU	1	27/64"	0.410	2.25	0.474	0.474	0.381	x	x	x	x	x	x
Woodcraft	Wall Street II Button Click BP	146597	1	27/64"	0.410	2.42	0.474	0.474	0.381	x	x	x	x	x	x
Arizona Silhouette	Sierra Button Click .7mm Pencil	20A	1	27/64"	0.410	1.76	0.474	0.474	0.381	x	x	x	x	x	x
Berea	Sierra Button Click .7mm Pencil	20A	1	27/64"	0.410	1.76	0.474	0.474	0.381	x	x	x	x	x	x
Penn State	Gatsby Button Click .7mm Pencil	PKGABU	1	27/64"	0.410	2.25	0.474	0.474	0.381	x	x	x	x	x	x
Woodcraft	Wall Street II Button Click .7mm Pencil	146597	1	27/64"	0.410	1.76	0.474	0.474	0.381	x	x	x	x	x	x
Arizona Silhouette	Sierra Vista, Tropical & Circuit Board Twist BP	70A	1	x	0.410	2.21	0.551	0.523	0.381	x	x	x	x	x	x
Berea	Sierra Tropical & Circuit Board Twist BP	70A	1	x	0.410	2.21	0.551	0.523	0.381	x	x	x	x	x	x
Rockler	Sierra Circuit Board Twist BP	35696 or 50A	1	x	0.410	2.21	0.551	0.523	0.381	x	x	x	x	x	x
Woodcraft	Wall Street III, Tropical & Circuit Board Twist BP	147478	1	x	0.410	2.21	0.551	0.523	0.381	x	x	x	x	x	x
Arizona Silhouette	Elegant Beauty Twist BP	20A	1	27/64"	0.410	2.21	0.474	0.474	0.381	x	x	x	x	x	x
Berea	Elegant Sierra Twist BP	20A	1	27/64"	0.410	2.21	0.474	0.474	0.381	x	x	x	x	x	x
Craft Supply USA	Aero Twist BP	050-4124	1	23/64"	0.347	1.98	0.474	0.474	0.324	x	x	x	x	x	x
Penn State	Majestic Squire Twist BP	PKMAJSQBU	1	3/8" or 'V'	0.368	0.495	0.495	0.342	0.342	x	x	x	x	x	x
Rockler	Elegant Sierra Twist BP	30467 or 20A	1	27/64"	0.410	2.21	0.474	0.474	0.381	x	x	x	x	x	x
Woodcraft	Wall Street Elegant Twist BP	146597	1	27/64"	0.410	2.21	0.474	0.474	0.381	x	x	x	x	x	x
Craft Supply USA	Broker Twist BP	050-4446	1	'U'	0.358	3.00	0.425	0.425	0.335	x	x	x	x	x	x
Penn State	CEO Twist BP	PKCEOBU	1	'U'	0.358	3.00	0.425	0.425	0.335	x	x	x	x	x	x
Woodcraft	Wall Street (I) Twist BP (Old)	140101	1	'U'	0.358	3.00	0.425	0.425	0.335	x	x	x	x	x	x
Arizona Silhouette	Carbara Twist BP	16A	1	3/8" or 'V'	0.368	2.84	0.510	0.452	0.342	x	x	x	x	x	x
Berea	Carbara Twist BP	16A	1	3/8" or 'V'	0.368	2.84	0.510	0.452	0.342	x	x	x	x	x	x
Craft Supply USA	Patriot Twist BP	050-4443	1	3/8" or 'V'	0.368	2.84	0.510	0.452	0.342	x	x	x	x	x	x
Penn State	Polaris Twist BP & .7mm Pencil	PKPOLBU	1	3/8" or 'V'	0.368	2.84	0.495	0.452	0.342	x	x	x	x	x	x
Penn State	Polaris Click BP	PKPOLBU	1	3/8" or 'V'	0.368	2.84	0.495	0.452	0.342	x	x	x	x	x	x
Rockler	Patriot Twist BP	24842	1	3/8" or 'V'	0.368	2.84	0.495	0.452	0.342	x	x	x	x	x	x

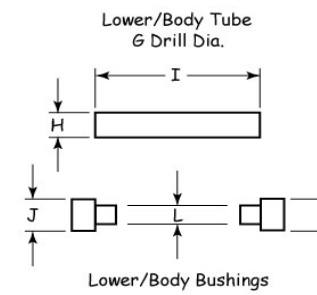
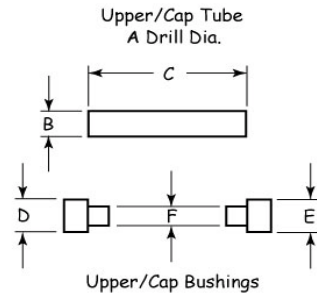
Pen Kit References for Bushings and Tubes

W Racinowski WRACINOWSKI at WI dot RR dot COM Revised 12-14-09



Cells that are blank require dimensions.

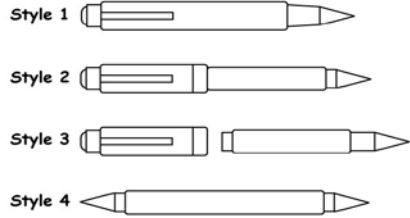
Tolerances for:
2 place Dims is +/- .01
3 Place Dims is +/- .003



Pen Kit Supplier	Pen Kit Description Grouped by Styling	Suppliers Bushing Set	Pen Style	Upper / Cap Tube			Upper / Cap Bushings			Lower / Body Tube			Lower / Body Bushing		
				A Drill Dia.	B Dia.	C Length	D Dia.	E Dia.	F Dia.	G Drill Dia.	H Dia.	I Length	J Dia.	K Dia.	L Dia.
Rockler	Carbara Twist BP	37210	1	3/8" or 'V'	0.368	2.84	0.510	0.452	0.342	x	x	x	x	x	x
Woodcraft	Atlas Twist BP	147206	1	3/8" or 'V'	0.368	2.84	0.510	0.452	0.342	x	x	x	x	x	x
Craft Supply USA	Clicker BP	050-4024	1	3/8" or 'V'	0.368	4.11	0.444	0.444	0.342	x	x	x	x	x	x
Craft Supply USA	Clicker .7mm Pencil	050-4024	1	3/8" or 'V'	0.368	4.39	0.444	0.444	0.342	x	x	x	x	x	x
Berea	Retro Twist BP	9A	2	11/32" or 'S'	0.338				0.316	11/32" or 'S'	0.338				0.316
Craft Supply USA	Americana Classic Twist BP	155-0405	1	11/32" or 'S'	0.338	2.17	0.413	0.413	0.316	x	x	x	x	x	x
PennState	Executive Twist BP & .7mm Pencil	PKEXECBU	1	3/8" or 'V'	0.368	2.88			0.342	x	x	x	x	x	x
Woodcraft	Retro Twist BP	148717	2	9mm	0.342	1.18	0.413	0.413	0.322	9mm	0.342	1.48	0.413	0.413	0.322
Craft Supply USA	Toolbox 5.6mm Pencil	050-4498	2	11mm	0.415	1.78	0.512	0.512	0.374	11mm	0.415	1.78	0.512	0.512	0.374
Craft Supply USA	Artist Sketch 5.6mm Pencil	050-5006	1	15/32"	0.450	3.46	0.580	0.557	0.429	x	x	x	x	x	x
PennState	Deluxe Pen & Sketch 5.6mm Pencil	PKSPCL2BU	1	11mm	0.415	2.69	0.576	0.500	0.374	x	x	x	x	x	x
PennState	Workshop Sketch 5.6mm Pencil	PKSPCLBU	2	11mm	0.415		0.512	0.512	0.374	11mm	0.415		0.512	0.512	0.374
PennState	Mini Sketch 3mm Pencil	PKSPCL3BU	1	'O' or 8mm	0.311	3.50	0.435	0.435	0.286	x	x	x	x	x	x
Rockler	Toolbox 5.6mm Pencil	26862	2	11mm	0.415				0.374	11mm	0.415				0.429
Rockler	Woodworkers 5.6mm Pencil	26397	1	10 mm or 25/64"	0.385				0.357	10 mm or 25/64"	0.385				0.357
Woodcraft	Woodworker / Artist 5.6mm Pencil	146768	1	15/32"	0.450	3.47	0.578	0.554	0.429	x	x	x	x	x	x
Arizona Silhouette	Flat Top Click Push Cap BP	4B	2	11mm	0.415				0.374	'O' or 8mm	0.311				0.286
Arizona Silhouette	Flat Top American Twist BP	1B	2	'O' or 8mm	0.311				0.286	'O' or 8mm	0.311				0.286
Arizona Silhouette	Flat Top American Elite Twist BP	1B	2	'O' or 8mm	0.311				0.286	'O' or 8mm	0.311				0.286
Arizona Silhouette	Elegant American Twist BP	15A or 17B	2	'O' or 8mm	0.311				0.286	'O' or 8mm	0.311				0.286
Berea	Elegant American Twist BP	15A or 17B	2	'O' or 8mm	0.311				0.286	'O' or 8mm	0.311				0.286
Berea	Flat Top American Double Twist Hybrid BP	1B	2	'O' or 8mm	0.311				0.286	'O' or 8mm	0.311				0.286
Berea	Flat Top Click Push Cap BP	4B	2	11mm	0.415				0.374	'O' or 8mm	0.311				0.286
Berea	Flat Top Twist BP	1B	2	'O' or 8mm	0.311				0.286	'O' or 8mm	0.311				0.286
Craft Supply USA	Americana Twist BP	955-0104	2	'O' or 8mm	0.311	2.05	0.487	.529 / .397	0.286	'O' or 8mm	0.311	2.05	0.397	0.397	0.286
Craft Supply USA	Silver Bullet	955-0104	2	'O' or 8mm	0.311	2.05	0.487	.529 / .397	0.286	'O' or 8mm	0.311	2.05	0.397	0.397	0.286
Craft Supply USA	Apprentice Americana Twist BP	486-2005	2	'O' or 8mm	0.311	2.05	0.492	.492 / .401	0.286	'O' or 8mm	0.311	2.05	0.401	0.401	0.286
PennState	Classic Twist BP	PKPARKBU	2	'O' or 8mm	0.311	2.06	0.492	0.492	0.286	'O' or 8mm	0.311	2.06	0.401	0.401	0.286
PennState	Classic Click BP	PKPARKBU2	2	11mm	0.415	2.11			0.374	'O' or 8mm	0.311	1.78			0.286
Rockler	Flat Top American Click Push Cap BP	30746	2	11mm	0.415				0.374	'O' or 8mm	0.311				0.286
Woodcraft	Classic American Click BP	146600	2	11mm	0.415	2.17	0.492	0.492	0.374	'O' or 8mm	0.311	1.69	0.387	0.387	0.286
Woodcraft	Classic American Twist BP	06R07	2	'O' or 8mm	0.311	2.01	0.495	0.495	0.286	'O' or 8mm	0.311	2.01	0.397	0.397	0.286
Arizona Silhouette	Flat Top American Twist .7mm Pencil	1B	2	'O' or 8mm	0.311				0.286	'O' or 8mm	0.311				0.286
Berea	Flat Top Twist .7mm Pencil	1B	2	'O' or 8mm	0.311				0.286	'O' or 8mm	0.311				0.286
Craft Supply USA	Americana Twist .7mm Pencil	155-5502	2	11/32" or 'S'	0.338	1.91	0.488	0.488	0.316	11/32" or 'S'	0.338	2.16	0.488	0.488	0.316

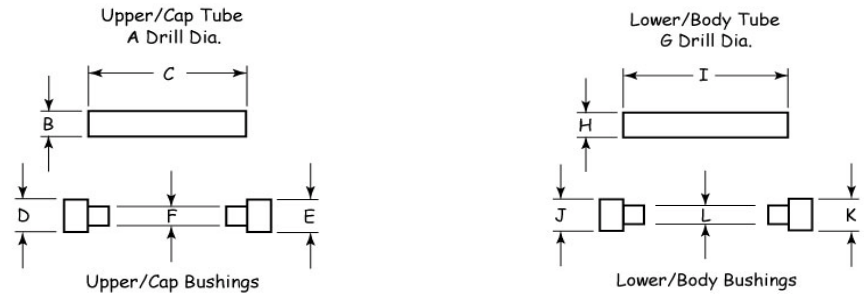
Pen Kit References for Bushings and Tubes

W Racinowski WRACINOWSKI at WI dot RR dot COM Revised 12-14-09



Cells that are blank require dimensions.

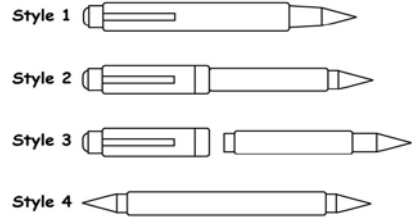
Tolerances for:
2 place Dims is +/- .01
3 Place Dims is +/- .003



Pen Kit Supplier	Pen Kit Description Grouped by Styling	Suppliers Bushing Set	Pen Style	Upper / Cap Tube			Upper / Cap Bushings			Lower / Body Tube			Lower / Body Bushing		
				A Drill Dia.	B Dia.	C Length	D Dia.	E Dia.	F Dia.	G Drill Dia.	H Dia.	I Length	J Dia.	K Dia.	L Dia.
PennState	Classic Twist .7mm Pencil	PKPARKBU3	2	'O' or 8mm	0.311	2.00	0.490	0.490	0.286	'O' or 8mm	0.311	2.00	0.390	0.390	0.286
Woodcraft	Classic American Twist .7mm Pencil	06R07	2	'O' or 8mm	0.311	2.01	0.495	0.495	0.286	'O' or 8mm	0.311	2.01	0.397	0.397	0.286
Arizona Silhouette	Round Top European Twist BP	3B	2	'O' or 8mm	0.311				0.286	'O' or 8mm	0.311				0.286
Arizona Silhouette	7mm Round Top European Twist BP	10A	2	7mm or 'J'	0.268				x	7mm or 'J'	0.268				x
Arizona Silhouette	Streamline 7mm Round Top Twist BP	18A	2	7mm or 'J'	0.268				x	7mm or 'J'	0.268				x
Berea	Round Top European Twist BP	3B	2	'O' or 8mm	0.311				0.286	'O' or 8mm	0.311				0.286
Craft Supply USA	Apprentice European Twist BP	486-2006	2	7mm or 'J'	0.268	2.09	0.406	.512 / .406	x	7mm or 'J'	0.268	2.36	0.406	0.360	x
Craft Supply USA	European / Deco European Twist BP	155-1100	2	7mm or 'J'	0.268	2.09	0.406	.529 / .425	x	7mm or 'J'	0.268	2.36	0.425	0.360	x
PennState	Designer Twist BP	PKMONTBU	2	7mm or 'J'	0.268	2.13			x	7mm or 'J'	0.268	2.38			x
Rockler	Round Top European Twist BP	29973	2	7mm or 'J'	0.268				x	7mm or 'J'	0.268				x
Rockler	Round Top Twist BP	21676	2	'O' or 8mm	0.311				0.286	'O' or 8mm	0.311				0.286
Woodcraft	European Twist BP	06562	2	7mm or 'J'	0.268	2.09	0.406	.512 / .400	x	7mm or 'J'	0.268	2.36	0.425	0.360	x
Woodcraft	European Deco Twist BP	06562	2	7mm or 'J'	0.268	2.09	0.406	.512 / .400	x	7mm or 'J'	0.268	2.36	0.425	0.360	x
Arizona Silhouette	Round Top European Twist .7mm Pencil	3B	2	'O' or 8mm	0.311				0.286	'O' or 8mm	0.311				0.286
Berea	Round Top European Twist .7mm Pencil	3B	2	'O' or 8mm	0.311				0.286	'O' or 8mm	0.311				0.286
Craft Supply USA	European .7mm Pencil	155-0045	2	11/32" or 'S'	0.338	2.17	0.410	.529 / .397	0.316	11/32" or 'S'	0.338	2.32	0.397	0.397	0.316
Rockler	Round Top European Twist .7mm Pencil	21676	2	'O' or 8mm	0.311				0.286	'O' or 8mm	0.311				0.286
Woodcraft	European Twist .5mm Pencil	123485	2	11/32" or 'S'	0.338	2.17	0.406	.512 / .400	0.316	11/32" or 'S'	0.338	2.33	0.400	0.400	0.316
Arizona Silhouette	Biscayne Flat Top Twist BP	AZSB-14A	2	7mm or 'J'	0.268		0.347	0.434	x	7mm or 'J'	0.268		0.434	0.331	x
Arizona Silhouette	Streamline 7mm Flat Top Twist BP	14A	2	7mm or 'J'	0.268				x	7mm or 'J'	0.268				x
Berea	Streamline Twist BP	14A	2	7mm or 'J'	0.268				x	7mm or 'J'	0.268				x
Craft Supply USA	Apprentice Roadster Twist BP	486-2015	2	7mm or 'J'	0.268	2.09	0.348	0.425	x	7mm or 'J'	0.268	2.09	0.425	0.332	x
Penn State	Trimline Twist BP	PKXMBU	2	7mm or 'J'	0.268	2.09	0.347	0.440	x	7mm or 'J'	0.268	2.09	0.440	0.330	x
Woodcraft	Toni Twist BP	145228	2	7mm or 'J'	0.268	2.09	0.330	0.415	x	7mm or 'J'	0.268	2.09	0.415	0.330	x
Arizona Silhouette	Elegant American Twist BP	15A or 17B	2	'O' or 8mm	0.311		0.400	0.470	0.286	'O' or 8mm	0.311		0.470	0.360	0.286
Woodcraft	Hart Double Twist BP	145233	2	'O' or 8mm	0.311	2.00	0.400	0.470	0.286	'O' or 8mm	0.311	2.15	0.470	0.360	0.286
Arizona Silhouette	Perfect Fit Convertable BP	14B	2	11/32" or 'S'	0.338				0.316	'O' or 8mm	0.311				0.286
Berea	Perfect Fit Convertable BP	14B	2	11/32" or 'S'	0.338				0.316	'O' or 8mm	0.311				0.286
Rockler	Convertible BP	61403	2	'O' or 8mm	0.311				0.286	'O' or 8mm	0.311				0.286
Arizona Silhouette	Perfect Fit Convertible .7mm Pencil	14B	2	11/32" or 'S'	0.338				0.316	'O' or 8mm	0.311				0.286
Berea	Perfect Fit Convertible .7mm Pencil	14B	2	11/32" or 'S'	0.338				0.316	'O' or 8mm	0.311				0.286
Rockler	Convertible .7mm Pencil	61403	2	'O' or 8mm	0.311				0.286	'O' or 8mm	0.311				0.286
Arizona Silhouette	Button Click BP	5A	2	11/32" or 'S'	0.338				0.316	11/32" or 'S'	0.338				0.316

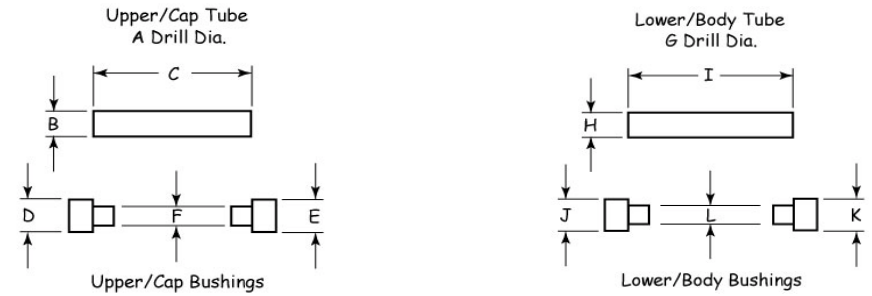
Pen Kit References for Bushings and Tubes

W Racinowski WRACINOWSKI at WI dot RR dot COM Revised 12-14-09



Cells that are blank require dimensions.

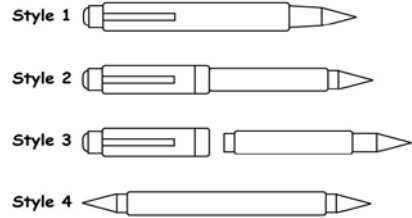
Tolerances for:
2 place Dims is +/- .01
3 Place Dims is +/- .003



Pen Kit Supplier	Pen Kit Description Grouped by Styling	Suppliers Bushing Set	Pen Style	Upper / Cap Tube			Upper / Cap Bushings			Lower / Body Tube			Lower / Body Bushing			
				A Drill Dia.	B Dia.	C Length	D Dia.	E Dia.	F Dia.	G Drill Dia.	H Dia.	I Length	J Dia.	K Dia.	L Dia.	
Berea	Click BP	5A	2	11/32" or 'S'	0.338				0.316	11/32" or 'S'	0.338				0.316	
Craft Supply USA	Click BP	155-4503	2	'O' or Bmm	0.311	1.96		0.373	0.373	0.286	'O' or Bmm	0.311	1.96	0.373	0.373	0.286
Craft Supply USA	Click .5mm Pencil	155-4503	2	'O' or Bmm	0.311	1.96		0.373	0.373	0.286	'O' or Bmm	0.311	1.96	0.373	0.373	0.286
Penn State	Click BP	PKBOWBU	2	'O' or Bmm	0.311				0.286	'O' or Bmm	0.311					0.286
Penn State	Slimline Pro Click BP & .7mm Pencil	PKPENXXBU	2	'O' or Bmm	0.311				0.286	'O' or Bmm	0.311					0.286
Rockler	Button Click BP	30631 or 5A	2	11/32" or 'S'	0.338				0.316	11/32" or 'S'	0.338					0.316
Woodcraft	Click BP	127767	2	'O' or Bmm	0.311			0.373	0.373	0.286	'O' or Bmm	0.311		0.373	0.373	0.286
Arizona Silhouette	Bullet Cartridge Twist Pen	26A	2	10 mm or 25/64"	0.385	2.09		0.466	0.466	0.357	x	x	x	x	x	x
Berea	Bullet Cartridge Twist Pen	26A	2	10 mm or 25/64"	0.385	2.09		0.466	0.466	0.357	x	x	x	x	x	x
Penn State	Bullet Cartridge Click Pen	PKCP2400BU	2	'O' or 8mm	0.311	2.03		0.466	0.466	0.286	x	x	x	x	x	x
Woodcraft	Bullet Cartridge Twist Pen	150488	2	10 mm or 25/64"	0.385	2.09		0.466	0.466	0.357	x	x	x	x	x	x
Arizona Silhouette	Cigar Twist BP	11A or 11B	2	10 mm or 25/64"	0.385	1.91		0.475	0.575	0.357	10 mm or 25/64"	0.385	2.20	0.530	0.459	0.357
Berea	Fat Cigar Twist BP	11A or 19B	2	10 mm or 25/64"	0.385	1.91		0.475	0.575	0.357	10 mm or 25/64"	0.385	2.20	0.530	0.459	0.357
Craft Supply USA	Apprentice Cigar Twist BP	486-2003	2	10 mm or 25/64"	0.385	1.91		0.475	0.575	0.357	10 mm or 25/64"	0.385	2.09	0.530	0.459	0.357
Craft Supply USA	Cigar Twist BP	155-4101	2	10 mm or 25/64"	0.385	1.91		0.475	0.575	0.357	10 mm or 25/64"	0.385	2.09	0.530	0.459	0.357
Penn State	Big Ben Cigar Twist BP	PKBIGBU	2	10 mm or 25/64"	0.385	1.94		0.475	0.575	0.357	10 mm or 25/64"	0.385	2.06	0.530	0.459	0.357
Penn State	Big Ben Cigar Screw Cap FP & RB	PKBIGBU	3	10 mm or 25/64"	0.385	2.00		0.475	0.575	0.357	10 mm or 25/64"	0.385	2.38	0.530	0.459	0.357
Rockler	Cigar Twist BP	24204	2	10 mm or 25/64"	0.385	1.91		0.475	0.575	0.357	10 mm or 25/64"	0.385	2.09	0.530	0.459	0.357
Woodcraft	Premier Cigar Twist BP	147161	2	10 mm or 25/64"	0.385	1.91		0.475	0.575	0.357	10 mm or 25/64"	0.385	2.20	0.530	0.459	0.357
Arizona Silhouette	Cigar .5mm Pencil	11A or 11B	2	10 mm or 25/64"	0.385	1.91		0.475	0.575	0.357	10 mm or 25/64"	0.385	2.06	0.530	0.459	0.357
Berea	Fat Cigar .5mm Pencil	11A or 19B	2	10 mm or 25/64"	0.385	1.91		0.475	0.575	0.357	10 mm or 25/64"	0.385	2.06	0.530	0.459	0.357
Penn State	Big Ben Cigar .5mm Pencil	PKBIGBU	2	10 mm or 25/64"	0.385	1.94		0.475	0.575	0.357	10 mm or 25/64"	0.385	2.06	0.530	0.459	0.357
Rockler	Cigar .5mm Pencil	24204	2	10 mm or 25/64"	0.385			0.475	0.575	0.357	10 mm or 25/64"	0.385	2.06	0.530	0.459	0.357
Woodcraft	Premier Cigar .5mm Pencil	147161	2	10 mm or 25/64"	0.385	1.91		0.475	0.575	0.357	10 mm or 25/64"	0.385	2.06	0.530	0.459	0.357
Arizona Silhouette	Bowtie Cigar Twist BP	22A	2	10 mm or 25/64"	0.385	1.91		0.475	0.554	0.357	10 mm or 25/64"	0.385	2.20	0.456	0.456	0.357
Berea	Bowtie Cigar Twist BP	22A	2	10 mm or 25/64"	0.385	1.91		0.475	0.554	0.357	10 mm or 25/64"	0.385	2.20	0.456	0.456	0.357
Woodcraft	Bowtie Cigar Twist BP	149798	2	10 mm or 25/64"	0.385	1.91		0.475	0.554	0.357	10 mm or 25/64"	0.385	2.20	0.456	0.456	0.357
Arizona Silhouette	Cubana Cigar Twist BP	11A or 11B	2	10 mm or 25/64"	0.385	1.91		0.475	0.575	0.357	10 mm or 25/64"	0.385	2.20	0.530	0.459	0.357
Berea	Hybrid Cigar Twist BP	11A or 19B	2	10 mm or 25/64"	0.385	1.91		0.475	0.575	0.357	10 mm or 25/64"	0.385	2.20	0.530	0.459	0.357
Rockler	Hybrid Cigar Twist BP	11A or 19B	2	10 mm or 25/64"	0.385	1.91		0.475	0.575	0.357	10 mm or 25/64"	0.385	2.20	0.530	0.459	0.357
Woodcraft	Hybrid Cigar Twist BP	147161	2	10 mm or 25/64"	0.385	1.91		0.475	0.575	0.357	10 mm or 25/64"	0.385	2.20	0.530	0.459	0.357
Arizona Silhouette	Ultra Cigar Twist BP	11A or 11B	2	10 mm or 25/64"	0.385	1.91		0.475	0.575	0.357	10 mm or 25/64"	0.385	2.20	0.530	0.459	0.357
Berea	Ultra Cigar Twist BP	11A or 19B	2	10 mm or 25/64"	0.385	1.91		0.475	0.575	0.357	10 mm or 25/64"	0.385	2.20	0.530	0.459	0.357
Woodcraft	Ultra Cigar Twist BP	147161	2	10 mm or 25/64"	0.385	1.91		0.475	0.575	0.357	10 mm or 25/64"	0.385	2.20	0.530	0.459	0.357

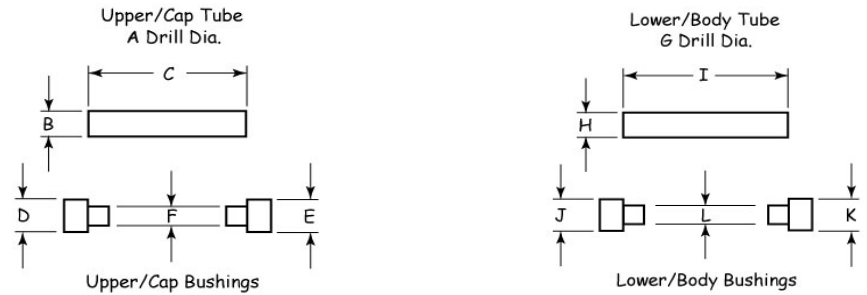
Pen Kit References for Bushings and Tubes

W Racinowski WRACINOWSKI at WI dot RR dot COM Revised 12-14-09



Cells that are blank require dimensions.

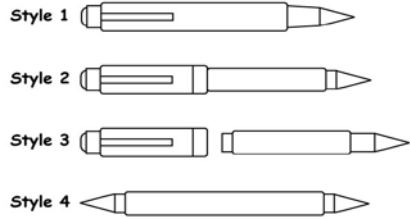
Tolerances for:
2 place Dims is +/- .01
3 Place Dims is +/- .003



Pen Kit Supplier	Pen Kit Description Grouped by Styling	Suppliers Bushing Set	Pen Style	Upper / Cap Tube			Upper / Cap Bushings			Lower / Body Tube			Lower / Body Bushing		
				A Drill Dia.	B Dia.	C Length	D Dia.	E Dia.	F Dia.	G Drill Dia.	H Dia.	I Length	J Dia.	K Dia.	L Dia.
Arizona Silhouette	Streamline American Flat Top Screw Cap RB & FP	2B	3	3/8" or 'V'	0.368				0.342	3/8" or 'V'	0.368				0.342
Arizona Silhouette	Flat Top Screw Cap RB & FP	2B	3	3/8" or 'V'	0.368				0.342	3/8" or 'V'	0.368				0.342
Berea	Flat Top Snap Cap RB & FP	2B	3	3/8" or 'V'	0.368				0.342	3/8" or 'V'	0.368				0.342
Berea	Flat Top Screw Cap RB & FP	1B	3	'O' or 8mm	0.311				0.286	'O' or 8mm	0.311				0.286
Berea	Flat Top American Screw Cap RB & FP	2B	3	3/8" or 'V'	0.368				0.342	3/8" or 'V'	0.368				0.342
Berea	Flat Top Series 2000 Screw Cap RB & FP	2B	3	3/8" or 'V'	0.368				0.342	3/8" or 'V'	0.368				0.342
PennState	Classic & Elite Screw Cap RB & FP	PKPAR10B2	3	10 mm or 25/64"	0.385	1.81	0.492	0.492	0.357	10 mm or 25/64"	0.385	2.28	0.401	0.401	0.357
Rockler	Flat Top Screw Cap RB & FP	21893	3	3/8" or 'V'	0.368				0.342	3/8" or 'V'	0.368				0.342
Woodcraft	Classic American Screw Cap RB & FP	06589	3	3/8" or 'V'	0.368	1.98	0.492	0.492	0.342	3/8" or 'V'	0.368	1.98	0.450	0.450	0.342
Woodcraft	Classic American Snap Cap RB	06589	3	3/8" or 'V'	0.368	1.98	0.492	0.492	0.342	3/8" or 'V'	0.368	1.98	0.450	0.450	0.342
Arizona Silhouette	Streamline European Screw Cap RB & FP	8B	3	3/8" or 'V'	0.368	1.98	0.440	0.525	0.342	3/8" or 'V'	0.368	1.98	0.449	0.449	0.342
Arizona Silhouette	Streamline Round Top Screw Cap RB & FP	8B	3	3/8" or 'V'	0.368	1.98	0.440	0.525	0.342	3/8" or 'V'	0.368	1.98	0.449	0.449	0.342
Berea	Streamline Round Top Screw Cap RB & FP	8B	3	3/8" or 'V'	0.368	1.98	0.440	0.525	0.342	3/8" or 'V'	0.368	1.98	0.449	0.449	0.342
Berea	Round Top European Screw Cap RB & FP	8B	3	3/8" or 'V'	0.368	1.98	0.440	0.525	0.342	3/8" or 'V'	0.368	1.98	0.449	0.449	0.342
PennState	Designer Elite Screw Cap RB & FP	PKMONTBU3	3	PKMONTSD3		2.22				PKMONTSD3		2-61/64"			
Woodcraft	European Screw Cap RB & FP	128452	3	3/8" or 'V'	0.368	1.98	0.449	0.524	0.342	3/8" or 'V'	0.368	1.98	0.447	0.444	0.342
Woodcraft	European Streamline Screw Cap RB & FP	06589	3	3/8" or 'V'	0.368	1.99	0.490	0.490	0.342	3/8" or 'V'	0.368	2.42	0.450	0.450	0.342
Arizona Silhouette	Baron Screw Cap RB	19A	3	15/32"	0.450	1.81	0.535	0.535	0.429	10 mm or 25/64"	0.385	2.09	0.482	0.482	0.357
Penn State	Tycoon Screw Cap RB & FP	PKTYBU	3	15/32"	0.450	1.81	0.563	0.535	0.429	10 mm or 25/64"	0.385	2.09	0.482	0.482	0.357
Woodcraft	Navigator Screw Cap RB	146019	3	15/32"	0.450	1.81	0.535	0.535	0.429	10 mm or 25/64"	0.385	2.09	0.482	0.482	0.357
Arizona Silhouette	Baron Tropical Screw Cap RB	51A	3	15/32"	0.450	1.81	0.563	0.563	0.429	10 mm or 25/64"	0.385	2.09	0.492	0.492	0.357
Woodcraft	Navigator Tropical Screw Cap RB	147483	3	15/32"	0.450	1.81	0.563	0.563	0.429	10 mm or 25/64"	0.385	2.09	0.492	0.492	0.357
Arizona Silhouette	Sedona Screw Cap RB	19A	3	15/32"	0.450	1.81	0.535	0.535	0.429	10 mm or 25/64"	0.385	2.09	0.492	0.492	0.357
Woodcraft	Sedona Screw Cap RB	146019	3	15/32"	0.450	1.81	0.535	0.535	0.429	10 mm or 25/64"	0.385	2.09	0.492	0.492	0.357
Arizona Silhouette	Gran Torino Screw Cap BP	AZSB-1A	3	x	x	x	x	x	x	10.5mm or 13/32"	0.400	3.35	0.512	0.478	0.380
Rockler	2007 Screw Cap RB	28239	3	x	x	x	x	x	x	10.5mm or 13/32"	0.400	3.35	0.512	0.478	0.380
Craft Supply USA	Zen Magnetic Cap BP	050-4439	3	x	x	x	x	x	x	10.5mm or 13/32"	0.400	3.35	0.512	0.512	0.380
Craft Supply USA	Jr Gentleman 2 Screw Cap RB & FP	050-4037	3	12.5mm or 0.492	0.483	1.89	0.567	0.567	0.460	10.5mm or 13/32"	0.400	2.09	0.512	0.480	0.380
Craft Supply USA	Jr Statesman 2 Screw Cap RB & FP	050-4037	3	12.5mm or 0.492	0.483	1.89	0.567	0.567	0.460	10.5mm or 13/32"	0.400	2.09	0.512	0.480	0.380
Craft Supply USA	Jr Retro Screw Cap RB & FP	050-4037	3	12.5mm or 0.492	0.483	1.89	0.567	0.567	0.460	10.5mm or 13/32"	0.400	2.09	0.512	0.480	0.380
Craft Supply USA	Jr Emperor Screw Cap RB & FP	050-4199	3	12.5mm or 0.492	0.483	1.89	0.567	0.567	0.460	10.5mm or 13/32"	0.400	2.09	0.512	0.512	0.380
Penn State	Majestic Jr Screw Cap RB	PKMAJJRBU	3	12.5mm or 0.492	0.483	1.90	0.550	0.576	0.460	10.5mm or 13/32"	0.400	2.09	0.516	0.516	0.380
Rockler	Jr Gentleman II Screw Cap RB	23571	3	12.5mm or 0.492	0.483	1.89	0.557	0.557	0.450	10.5mm or 13/32"	0.394	2.09	0.501	0.468	0.380

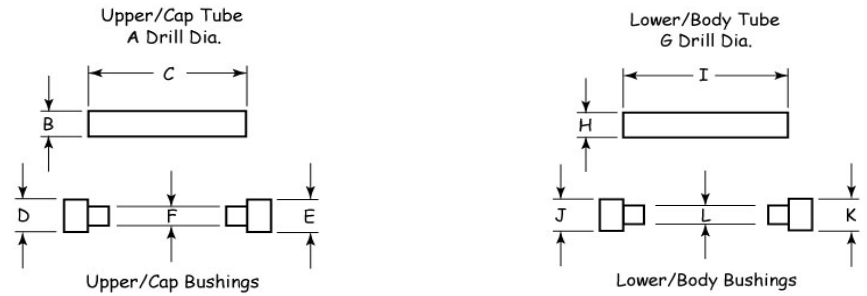
Pen Kit References for Bushings and Tubes

W Racinowski WRACINOWSKI at WI dot RR dot COM Revised 12-14-09



Cells that are blank require dimensions.

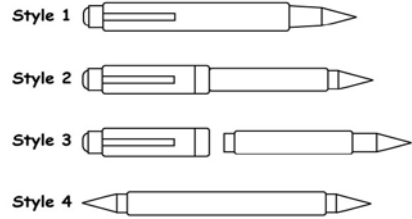
Tolerances for:
2 place Dims is +/- .01
3 Place Dims is +/- .003



Pen Kit Supplier	Pen Kit Description Grouped by Styling	Suppliers Bushing Set	Pen Style	Upper / Cap Tube			Upper / Cap Bushings			Lower / Body Tube			Lower / Body Bushing		
				A Drill Dia.	B Dia.	C Length	D Dia.	E Dia.	F Dia.	G Drill Dia.	H Dia.	I Length	J Dia.	K Dia.	L Dia.
Craft Supply USA	Panache Screw Cap BP	050-4011	3	12.5mm or 0.492	0.483	2.02	0.670	0.570	0.460	10.5mm or 13/32"	0.400	2.91	0.570	0.788	0.378
Rockler	Panache Screw Cap BP	22907	3	12.5mm or 0.492	0.483	2.02	0.670	0.570	0.460	10.5mm or 13/32"	0.400	2.91	0.570	0.788	0.378
Penn State	Nouveau Sceptre Screw Cap BP & FP	PKDBBUA	3	12.5mm or 0.492	0.483	1.69	0.648	0.575	0.460	10.5mm or 13/32"	0.400	2.09	0.513	0.458	0.380
Penn State	Nouveau Sceptre RB	PKDBBUA	3	12.5mm or 0.492	0.483	1.69	0.648	0.575	0.460	10.5mm or 13/32"	0.400	2.09	0.513	0.513	0.380
Craft Supply USA	Americana Twist BP	955-0104	2	'O' or Bmm	0.311	2.05	0.487	.529 / .397	0.286	'O' or Bmm	0.311	2.05	0.397	0.397	0.286
Craft Supply USA	Americana Screw Cap RB & FP	955-0502	3	10 mm or 25/64"	0.385	1.97	0.490	0.490	0.357	10 mm or 25/64"	0.385	2.16	0.456	0.456	0.357
Craft Supply USA	Artisan Screw Cap RB & FP	155-5111	3	10 mm or 25/64"	0.385	2.17	0.450	0.450	0.357	10 mm or 25/64"	0.385	2.17	0.450	0.450	0.357
Craft Supply USA	Executive Screw Cap RB & FP	155-5102	3	27/64"	0.410	1.73	0.480	0.507	0.381	27/64"	0.410	2.92	0.478	0.466	0.381
Craft Supply USA	Jr Gentleman Twist Cap BP & .7mm Pencil	050-4041	2	15/32"	0.450	1.93	0.535	0.535	0.428	10mm or 25/64"	0.385	2.09	0.480	0.460	0.357
Rockler	Jr Gentleman Twist Cap BP		2												
Arizona Silhouette	Churchill Screw Cap RB	16B	3	33/64"	0.510	1.69	0.590	0.590	0.494	31/64"	0.470	1.97	0.536	0.536	0.450
Berea	Churchill Screw Cap RB	16B	3	33/64"	0.510	1.69	0.590	0.590	0.494	31/64"	0.470	1.97	0.536	0.536	0.450
PennState	Apollo Elite Screw Cap RB & FP	PKAPRBU	3	9/16"		1.69	0.625	0.625		12.5mm or 0.492	0.483	2.13	0.536	0.536	0.460
Rockler	Churchill Screw Cap RB	25348	3	33/64"	0.510	1.69	0.590	0.590	0.494	31/64"	0.470	1.97	0.536	0.536	0.450
Woodcraft	Churchill Screw Cap RB	144635	3	33/64"	0.510	1.69	0.590	0.590	0.494	31/64"	0.470	1.97	0.536	0.536	0.450
Arizona Silhouette	EL Grande Twist Cap BP	16B	2	33/64"	0.510	1.69	0.590	0.590	0.494	31/64"	0.470	1.97	0.536	0.536	0.450
Arizona Silhouette	EL Grande Screw Cap RB	16B	3	33/64"	0.510	1.69	0.590	0.590	0.494	31/64"	0.470	1.97	0.536	0.536	0.450
Berea	EL Grande Twist Cap BP	16B	2	33/64"	0.510	1.69	0.590	0.590	0.494	31/64"	0.470	1.97	0.536	0.536	0.450
Berea	EL Grande and Elite Screw Cap RB	16B	3	33/64"	0.510	1.69	0.590	0.590	0.494	31/64"	0.470	1.97	0.536	0.536	0.450
Craft Supply USA	Old Ligerio Screw Cap RB	050-4055	3	17/32"		1.69	0.590	0.590		31/64"	0.470	1.97	0.536	0.536	0.450
PennState	Olympian Elite Screw Cap RB	PKOLBU	3	33/64"	0.510	1.69	0.590	0.590	0.494	31/64"	0.470	2.00	0.536	0.536	0.450
PennState	Olympian Elite 2 Screw Cap RB	PKOL2BU	3	33/64"	0.510	1.69	0.590	0.655	0.494	31/64"	0.470	2.00	0.536	0.536	0.450
Rockler	EL Grande Screw Cap RB	25348	3	33/64"	0.510	1.69	0.590	0.590	0.494	31/64"	0.470	1.97	0.536	0.536	0.450
Woodcraft	EL Grande Screw Cap RB & FP	144635	3	33/64"	0.510	1.69	0.590	0.590	0.494	31/64"	0.470	1.97	0.536	0.536	0.450
Arizona Silhouette	Cambridge Screw Cap RB	16B	3	33/64"	0.510	1.69	0.590	0.590	0.494	31/64"	0.470	1.97	0.536	0.536	0.450
Berea	Cambridge Screw Cap RB	16B	3	33/64"	0.510	1.69	0.590	0.590	0.494	31/64"	0.470	1.97	0.536	0.536	0.450
Woodcraft	Cambridge Screw Cap RB	144635	3	33/64"	0.510	1.69	0.590	0.590	0.494	31/64"	0.470	1.97	0.536	0.536	0.450
Craft Supply USA	Imperial Screw Cap RB & FP	050-4198	3	14mm or 35/64"	0.539	1.90	0.616	0.616	0.510	15/32"	0.450	1.97	0.552	0.552	0.429
Craft Supply USA	Lotus Screw Cap RB & FP	050-4198	3	14mm or 35/64"	0.539	1.65	0.616	0.616	0.510	15/32"	0.450	1.74	0.552	0.552	0.429
Arizona Silhouette	El Presidente Screw Cap RB	50A	3	14mm or 35/64"	0.539	1.97	0.621	0.667	0.510	31/64"	0.472	2.33	0.609	0.550	0.447
Woodcraft	Robusto Screw Cap RB (Old)	144983	3	14mm or 35/64"	0.539	1.97	0.621	0.667	0.510	31/64"	0.472	2.33	0.609	0.550	0.447

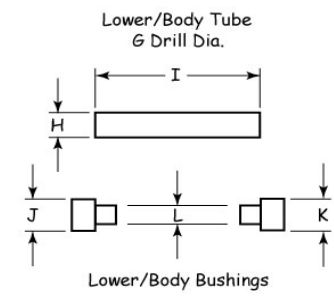
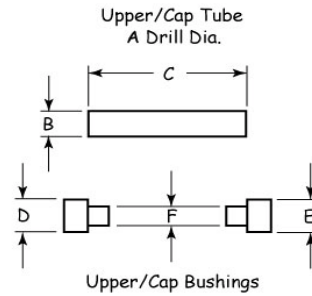
Pen Kit References for Bushings and Tubes

W Racinowski WRACINOWSKI at WI dot RR dot COM Revised 12-14-09



Cells that are blank require dimensions.

Tolerances for:
2 place Dims is +/- .01
3 Place Dims is +/- .003



Pen Kit Supplier	Pen Kit Description Grouped by Styling	Suppliers Bushing Set	Pen Style	Upper / Cap Tube			Upper / Cap Bushings			Lower / Body Tube			Lower / Body Bushing		
				A Drill Dia.	B Dia.	C Length	D Dia.	E Dia.	F Dia.	G Drill Dia.	H Dia.	I Length	J Dia.	K Dia.	L Dia.
Arizona Silhouette	El Toro Screw Cap FP (Short El Presidente)	50A	3	14mm or 35/64"	0.539		0.621	0.667	0.510	31/64"	0.472		0.609	0.550	0.447
Craft Supply USA	Gentleman Screw Cap RB & FP	050-4035	3	37/64"	0.571	2.05	0.650	0.650	0.547	15/32"	0.450	2.37	0.598	0.525	0.427
Craft Supply USA	Statesman Screw Cap RB & FP	050-4035	3	37/64"	0.571	2.05	0.650	0.650	0.547	15/32"	0.450	2.37	0.598	0.525	0.427
Craft Supply USA	Emperor Screw Cap RB & FP	050-4135	3	37/64"	0.571	1.97	0.650	0.650	0.547	15/32"	0.450	2.26	0.598	0.598	0.427
Penn State	Majestic Screw Cap RB & FP	PKMAJBU	3	37/64"	0.571	1.97	0.650	0.650	0.547	15/32"	0.450	2.15	0.598	0.570	0.427
Rockler	Majestic Screw Cap RB & FP	28105	3	37/64"	0.571	1.97	0.650	0.650	0.547	29/64"	0.450	2.15	0.598	0.570	0.427
Craft Supply USA	Apprentice Teachers Twist BP	486-2007	4	7mm or 'J'	0.268	2.19	0.331	0.331	x	7mm or 'J'	0.268	(2) @ .81	0.331	0.331	x
PennState	Teachers Twist BP	PKMBUSH3	4	7mm or 'J'	0.268	2.19	0.331	0.331	x	7mm or 'J'	0.268	(2) @ .81	0.331	0.331	x
Woodcraft	Teachers Twist BP	06R03	4	7mm or 'J'	0.268	2.19	0.331	0.331	x	7mm or 'J'	0.268	(2) @ .81	0.331	0.331	x

Note: I would like to thank the following individuals for their assistance and inspiration in completing this effort. Alex Lesniak 'Pens for College', Barry Gross, Chris Huybregts, David Drickhamer, David Jamieson, Douglas Dompkowski, Hans Wunch, Jim McFarland, Joe Agrella, KD, Rob Wolfe, Ron Hossack and others that I may have forgotten at this moment. I have not received any authorized data for this chart from the aforementioned suppliers of pen kits.

All data was compiled from actual pen kits and bushings, published information and that which was supplied from other turners. *Please use this chart with discretion as this is only meant to be used as a reference guide.*

Please report any additions, corrections, requested revisions or suggestions to WRACINOWSKI at WI dot RR dot COM